

INTERCHANGE UNIT
(Machine Code: B481)

1. REPLACEMENT AND ADJUSTMENT

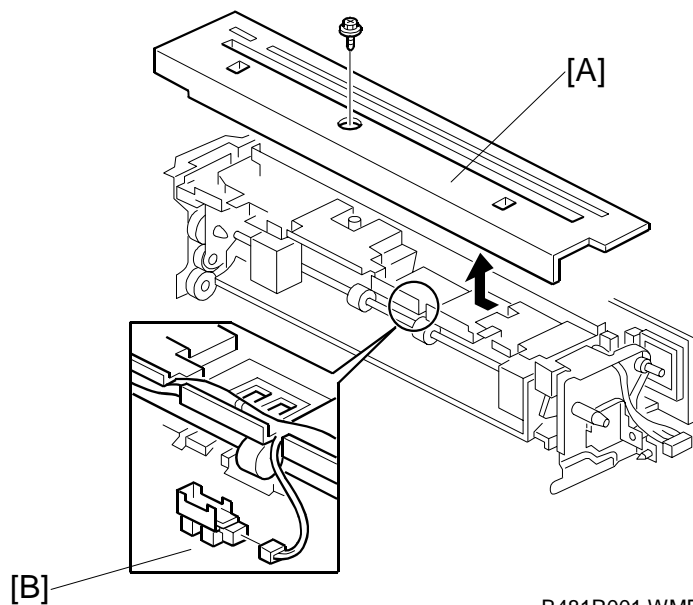
⚠ CAUTION

Turn off the main power switch and unplug the machine before beginning any of the procedures in this section.

NOTE: This manual uses the following symbols.

☛ : See or Refer to 🔩 : Screws 📡 : Connector 📌 : Clip ring
Ⓢ : E-ring

1.1 EXIT SENSOR REPLACEMENT

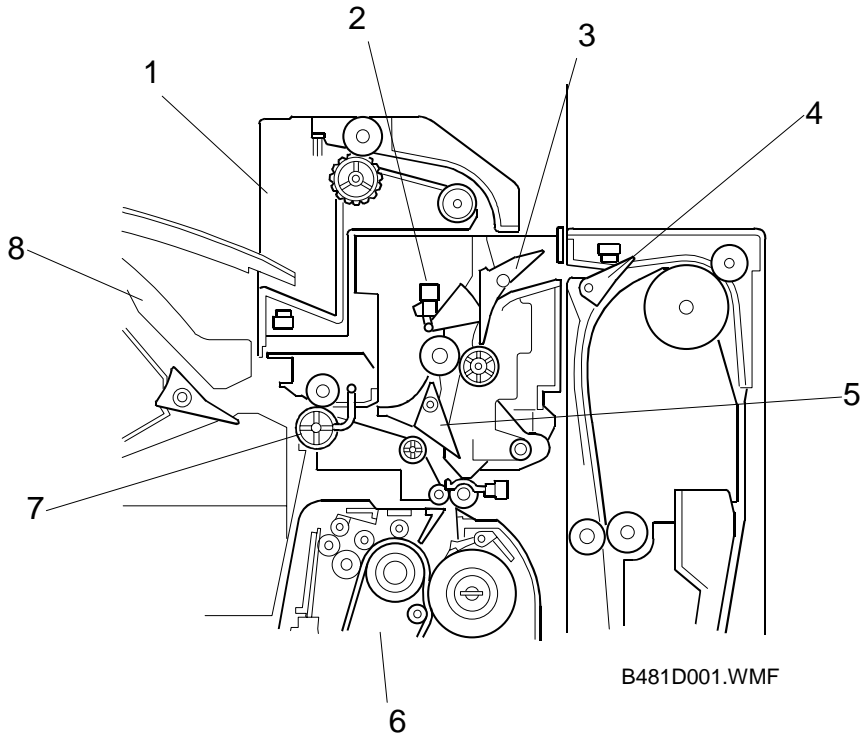


B481R001.WMF

1. Interchange unit
2. Upper cover [A] of the interchange unit
3. Exit sensor [B] (📡 x 1)

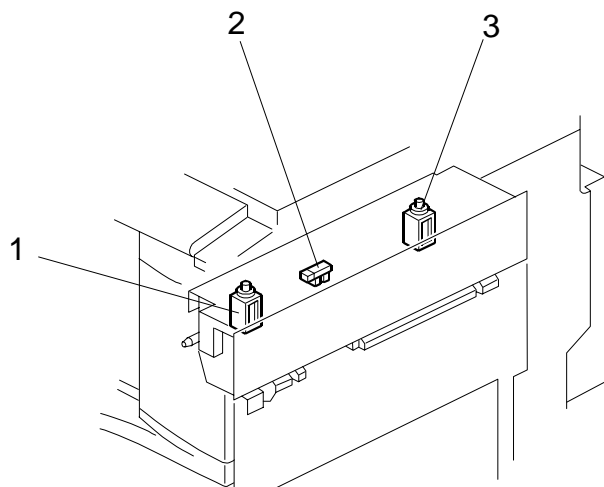
2. DETAILED DESCRIPTION

2.1 MECHANICAL COMPONENT LAYOUT

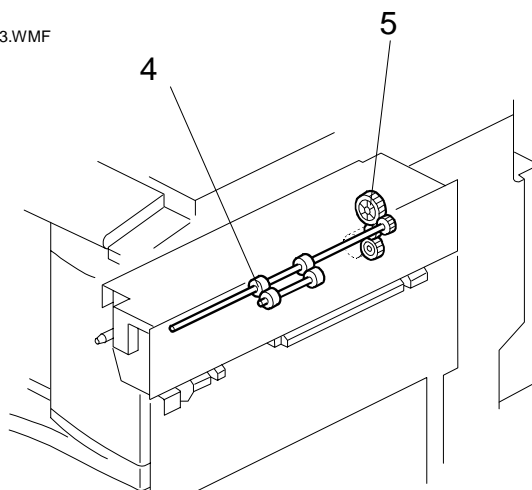


1. 1-bin Tray (Option)
2. Exit Sensor
3. Duplex Junction Gate
4. Duplex Unit (Option)
5. Exit Junction Gate
6. Fusing Unit (Inside the Copier)
7. Exit Roller
8. Bridge Unit

2.2 ELECTRICAL COMPONENT AND DRIVE LAYOUT



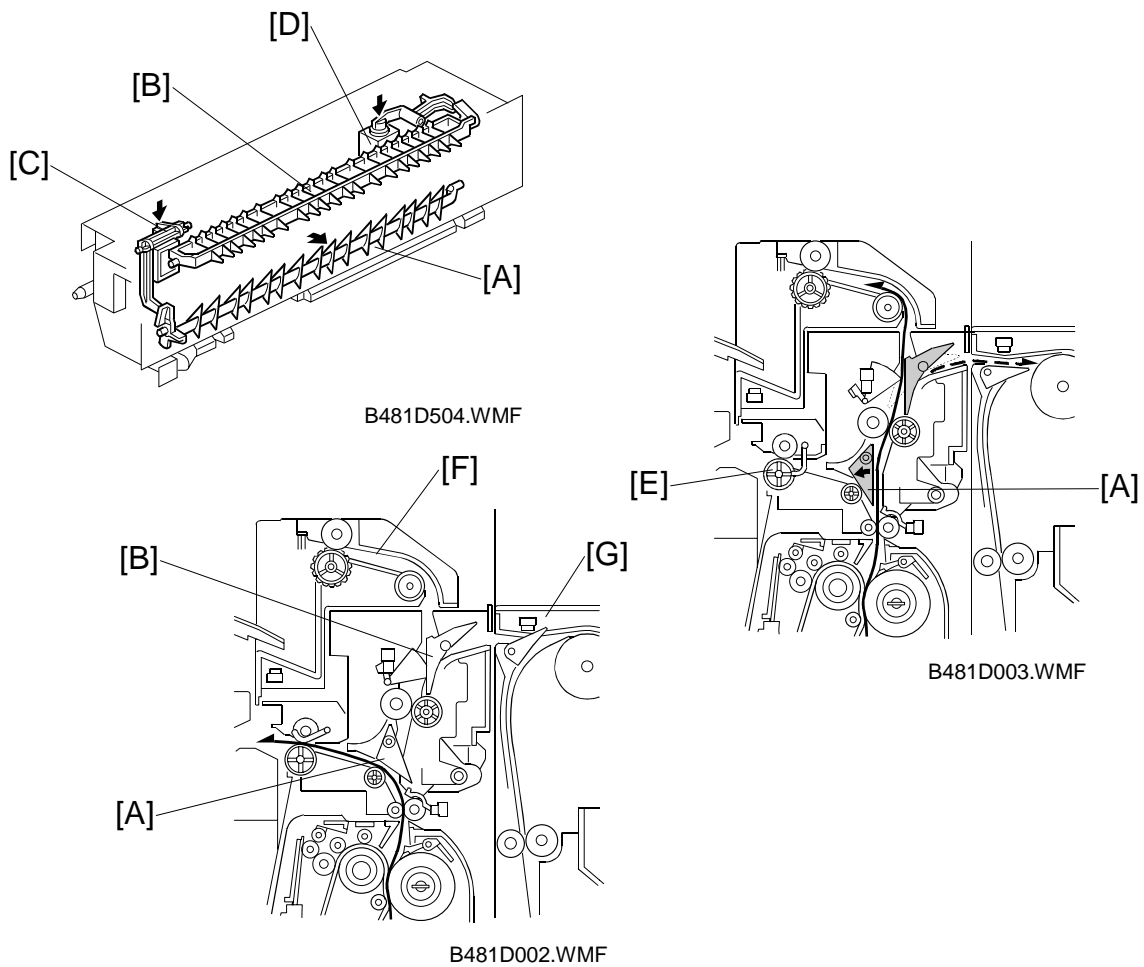
B481D503.WMF



B481R554.WMF

- | | |
|----------------------------------|----------------|
| 1. Exit Junction Gate Solenoid | 4. Exit Roller |
| 2. Exit Sensor | 5. Drive Gear |
| 3. Duplex Junction Gate Solenoid | |

2.3 JUNCTION GATE MECHANISM



Depending on the selected mode, the copies are directed up, left, or right by the exit junction gate [A] and the duplex junction gate [B]. These are controlled by the exit junction gate solenoid [C] and the duplex junction gate solenoid [D].

To the Exit Tray or Bridge Unit (for the Upper Tray on top of the Bridge Unit, or the Finisher)

The exit junction gate solenoid stays off and the paper is directed to the copier exit or bridge unit [E].

To the 1-bin Tray

The exit junction gate solenoid turns on and the duplex junction gate solenoid stays off. The paper is directed to the 1-bin tray [F].

To the Duplex Unit

The exit junction gate solenoid and the duplex junction gate solenoid both turn on and the paper is directed to the duplex unit [G].